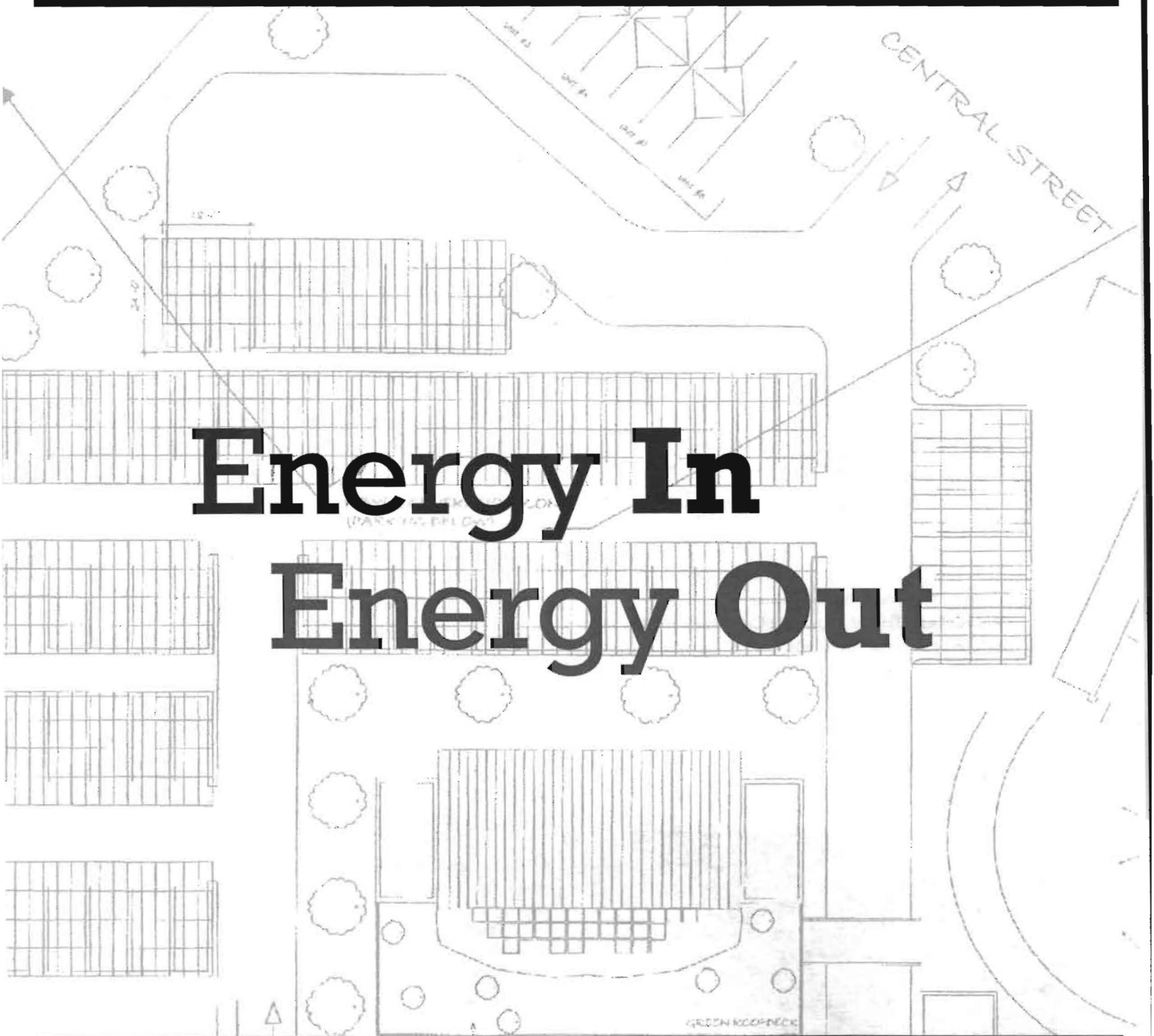


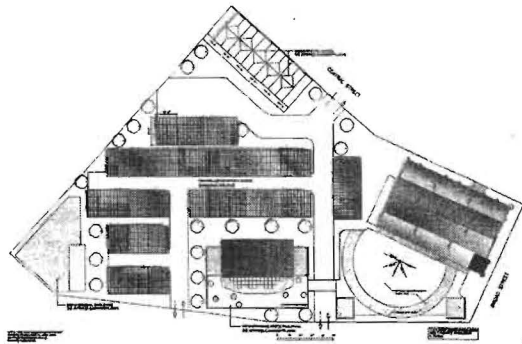
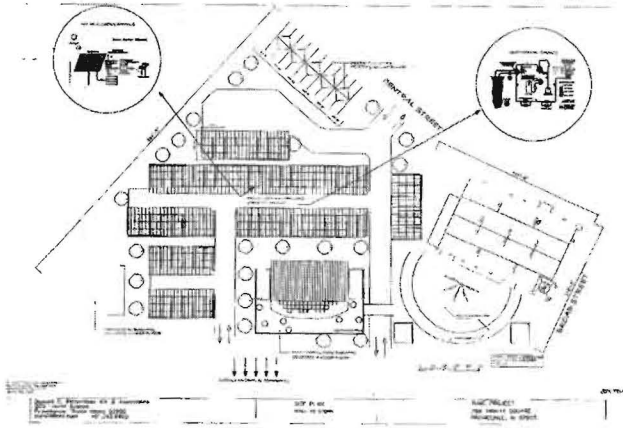
THE TRINITY PROJECT

An architectural site plan for the Trinity Project. The plan shows several rectangular building footprints with grid patterns, representing different units or sections. A prominent feature is a large, central building with a curved front and a grid pattern. To the right, a street labeled 'CENTRAL STREET' runs vertically, with arrows indicating traffic flow. Various trees and landscaping elements are scattered throughout the site. The text 'Energy In' and 'Energy Out' is overlaid in large, bold, black letters across the center of the plan. Other text on the plan includes 'GREEN ROOFING' near the bottom right and 'PARKING' near the center.

Energy In Energy Out

TRINITY RESTORATION INC.

PROJECT DESCRIPTION



Above: Preliminary Project Plans;
Bottom Left: Trinity Repertory Company performance in the late 1960s

We need your help to advance the goals of a very special community development project.

We are working to restore the 94 year-old Trinity Community Theater and, in the process, create the state's first neighborhood-based performing arts academy designed as a "green energy" complex —using and showcasing clean, renewable solar and geothermal technologies.

The theater building (Parish House) is listed on the National Register of Historic Buildings, as is the sanctuary. Built in 1914 and designed by architect George W. Kramer, it originally served as the educational wing of Trinity Church at a time when it had the largest Sunday Education Program in New England. It is in Trinity's community theater where the now nationally renowned Trinity Repertory Company began in 1964, and grew until moving to larger quarters in 1973.

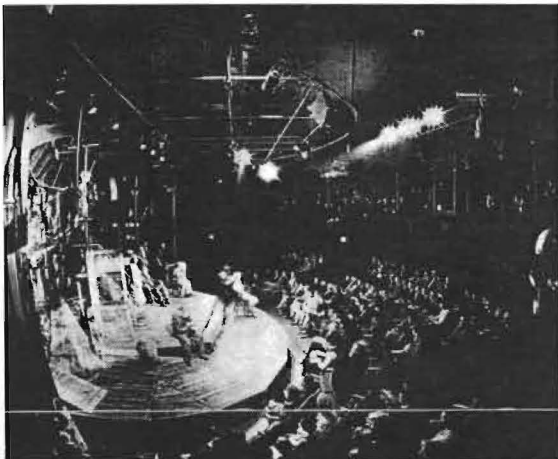
The Trinity Project, co-located on the grounds of the historic Trinity United Methodist Church (1859) in Providence, is a multi-million dollar development project that is recruiting major donors and prospective non-profit, arts-related tenants as well as others who can lend their support to this special community development effort.

Today, Trinity United Methodist Church is a place of worship and community service for first-generation immigrants from West Africa —Liberia, Nigeria, Sierra Leone and Ghana. Trinity is now beginning the celebration of its 149th year anniversary.

When completed, **The Trinity Project** will provide first-class academic space to students who show promise in the performing arts – music, theater, and dance—coupled with multiple, well-equipped venues to rehearse, perform and record in.

The theme, **Energy In, Energy Out**, denotes utilizing the energy from the sun and ground to create a much lower cost facility to operate, while the academy itself will be a place where young people are motivated to transform their human energy into talents that can help uplift them, their families and the entire community.

Significantly, representatives of the state's African and African-American communities are helping to lead this green, arts education project, with broad support from the wider community.



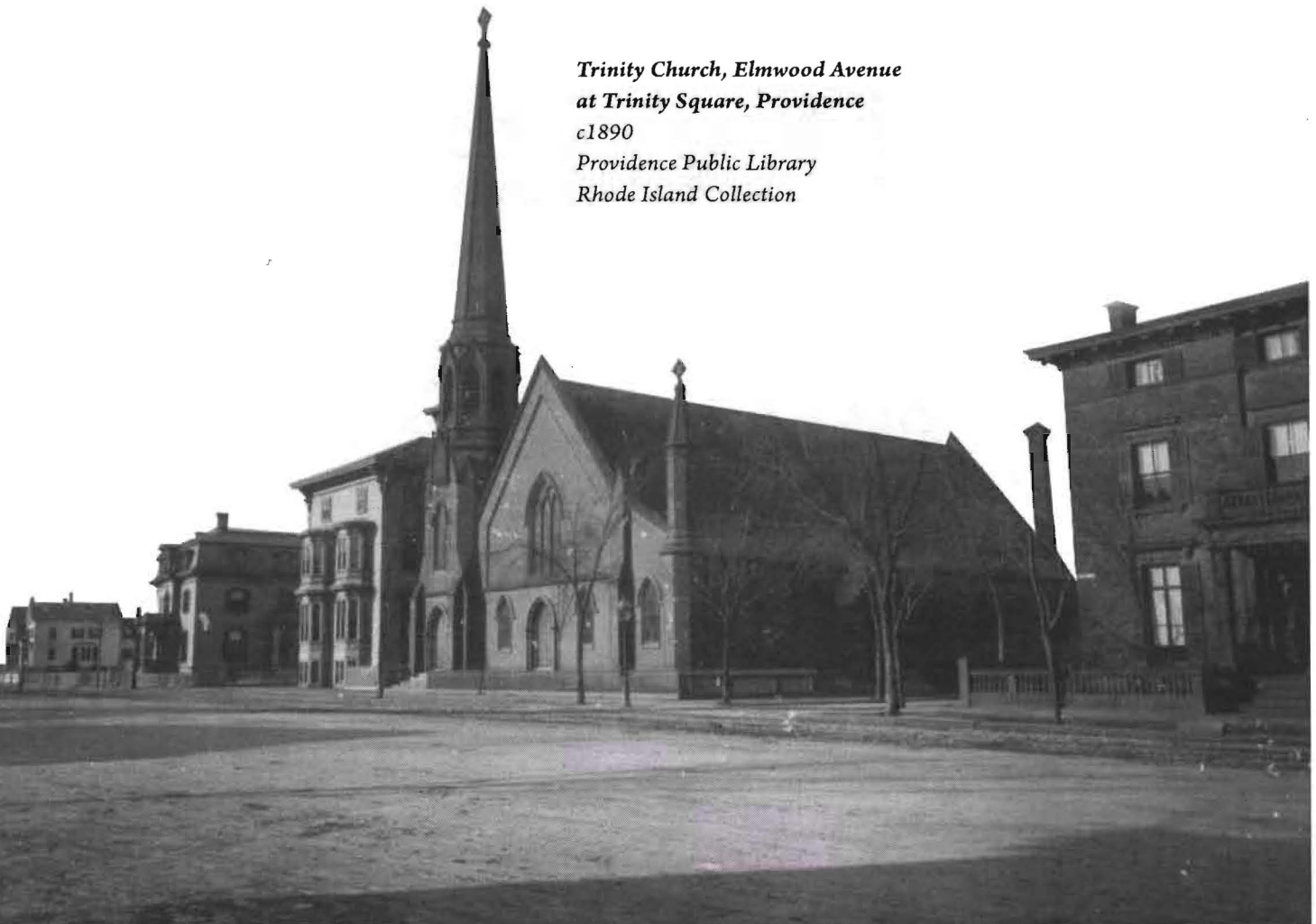
Trinity Project Partners identified to date include: National Grid, the Gilbane Building Company, the Rhode Island Office of Energy Resources, the Rhode Island Historic Preservation and Heritage Commission, the Rhode Island Foundation, the Providence Public Schools Department, the Mayor's Office/City of Providence, Trinity Repertory Company, the RISEM District of the United Methodist Church, and the Rhode Island State Council of Churches. Also: New Ecology, the Ecologic Group LLC, CCRI's Advanced Building Technologies Division, RISE Engineering, Design One Consortium, DSR AIA Associates and Energy Engineering & Design, Inc.

The project's architects are Donald S. Richardson, AIA; and Lynne Bryan Phipps, AIA and LEED-certified.

“We must accept art as art, as an end in itself, and strive to make it part of the lives of all because, quite simply, it is the essence of civilization.”

—Bradley Morison and Julie Gordon Dalglish
Waiting in the Wings, 1987

*Trinity Church, Elmwood Avenue
at Trinity Square, Providence
c1890
Providence Public Library
Rhode Island Collection*



The rapidly rising price of energy is one of the greatest challenges facing communities across America. The movement toward the increased use of cleaner, renewable energy is deemed critically important in an age of climate change awareness. Our immense energy challenges are also closely linked to national security concerns and represent a new opportunity to create skilled jobs in the construction and manufacturing sectors of our post-industrial economy.

Successfully integrating the energy conservation, environmental protection and historic preservation goals of the project represents by far its greatest challenge, but also its highest promise as a statewide (if not regional or national) demonstration project.

The community bridge-building aspects of The Trinity Project are also extraordinary. We invite your active participation as, together, we create an exciting, more inclusive and just future for the generations that follow.

Trinity Restoration Inc. (TRI) is an independent, non-profit, charitable (501c3) organization dedicated to planning and implementing this unique historic preservation vision at Trinity Square in Providence. TRI is a member of the broader Trinity Gateway Alliance whose other members include Grace Episcopal Church, Elmwood Foundation, Greater Elmwood Neighborhood Services, SWAP, and West Elmwood Housing Development Corporation.

FOR MORE INFORMATION CONTACT

Mr. Joseph E. Newsome
Lead Development
Consultant
401-714-6889
newsomefamily@cox.net

Mr. Richardson D. Ogidan
Project Director
401-439-3018
rdogidan@cox.net

Dr. Mator M. F. Kpangbai
TRI Board Chair
401-578-0986
mator.kpangbai@ppsd.org

trinityrestorationinc@tumc.necoxmail.com

